

Serco Guardian JV

serco



EcoPark Operation EM&A Quarterly Report #4

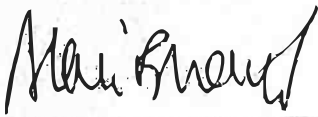


February 2008 -
April 2008


Report no: 01464R061

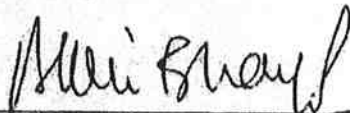

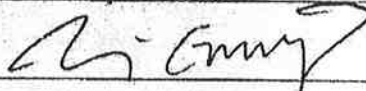


EcoPark Operation EM&A Quarterly Report #4
February 2008 - April 2008

Certified By 
Alexi BHANJA
ET Leader

Verified By 
Mike BAINS
IEC

Approved By 
Lawrence WONG
EPD Principal EPO

Author: Alexi BHANJA 
Checker: Winnie MA 
Approver: Gulyi LI 
Report no: 01464R061 Date: 2 May 2008

This report has been prepared for Serco Guardian JV in accordance with the terms and conditions of appointment for "EcoPark Operation EM&A Quarterly Report #4" dated 24 January 2007. Hyder Consulting Ltd (COI Number 126012) cannot accept any responsibility for any use of or reliance on the contents of this report by any third party.

Hyder Consulting Ltd
COI Number 126012
47th Floor, Hopewell Centre, 183 Queens Road East, Wanchai, Hong Kong
Tel: +852 2911 2233 Fax: +852 2805 5028 www.hyderconsulting.com



Contents

1	Executive Summary	1
2	Basic Project Information	3
2.1	Overview.....	3
2.2	SGJV Organisation.....	3
2.3	Operation Programme	3
2.4	EM&A Organisation	3
3	Summary of EM&A Requirements	5
3.1	Monitoring Parameters	5
3.2	Environmental Quality Performance Limits and EAP	5
3.3	Environmental Audit of Non-monitored Parameters	6
3.4	Environmental Mitigation Measures	6
3.5	Environmental Requirements in Tenancy Agreements	6
4	Operation Status.....	6
4.1	Tenants and Processes – First Batch.....	6
4.1.1	Tenancy EP06-032.....	7
4.1.2	Tenancy EP06-033.....	7
4.1.3	Tenancy EP06-034.....	7
4.2	Tenants and Processes – Second Batch	7
4.2.1	Tenancy EP07-01.....	8
4.2.2	Tenancy EP07-02.....	8
4.2.3	Tenancy EP07-03.....	8
4.3	Tenants and Processes – Third Batch	9
4.4	Throughput Statistics.....	9
5	Implementation Status of Environmental Protection Measures.....	11
6	Monitoring Results	11
7	Waste Generation Statistics	11
8	Summary of Environmental Audit.....	11
8.1	February 2008	11
8.2	March 2008.....	11
8.3	April 2008	13
9	Complaints.....	13
10	Conclusions	13

Appendices

- 1 Environmental Mitigation Measures (from the Implementation Schedule)
- 2 Environmental Requirements in Tenancy Agreements
- 3 Endorsed Process Review Checklist
- 4 Material and Waste Throughputs [Not included – no recycling activities within EcoPark at this time]
- 5 LFG Monitoring Data [Not included – no monitoring required to be carried out at this time]
- 6 Graphical Plots of Monitored Parameters [Not included – no monitoring required to be carried out at this time]
- 7 Complaints Log [Not included – no complaints received]
- 8 Proforma [Not included – no recycling activities within EcoPark at this time]

List of Figures

- 1-1 Location of EcoPark in Tuen Mun Area 38
- 2-1 SGJV Organisation
- 2-2 EM&A Organisation
- 4-1 Lot Usage Within EcoPark

List of Tables

- 3-1 Action Levels, Limit Levels and Event and Action Plan for LFG

List of Photographs

- 8-1 Soil Debris on the Road Outside EP08-01
- 8-2 Oil Drum Without drip Tray at EP07-03

1 Executive Summary

EcoPark is a key element in Government's waste management policy that aims to promote the local recycling industry and jump-start a circular economy to provide a sustainable solution to our waste problems. EcoPark is being developed in two phases at a site in Tuen Mun Area 38 (see **Figure 1-1**). In November 2006, the seven-year contract for the operation of EcoPark – *EP/SP/53/06 Provision of Management Services for EcoPark in Tuen Mun Area 38* – was awarded to Serco Guardian JV (SGJV) by the Environmental Protection Department (EPD). SGJV, the "Operator" of EcoPark have engaged Hyder Consulting as their Environmental Team (ET) to carry out the Environmental Monitoring and Audit (EM&A) required by the EM&A Manual in accordance with the conditions of the Environmental Permit.

This is the fourth quarterly EM&A report prepared for the operation phase of EcoPark and covers February 2008 to April 2008. To-date there have been no complaints received; no notifications of summons; and no successful prosecutions.

In terms of monitoring, only quarterly monitoring of landfill gas (LFG) is required during operation phase EM&A and this only required "following construction". As construction is not yet been completed, operation phase LFG monitoring is not yet required.

In terms of auditing, all of the tenants' recycling activities are to be audited on a monthly basis, and the results are to be summarised in this report. At present, however, EcoPark is still under construction and while a number of tenants have already signed their tenancy agreements, none are carrying out recycling activities within their lots (although three lots are currently being prepared by incumbent tenants).

As such, no recycling activities are being carried out and to there is nothing to report at this time. Notwithstanding, the ET have made monthly site inspections and some general observations have been made.

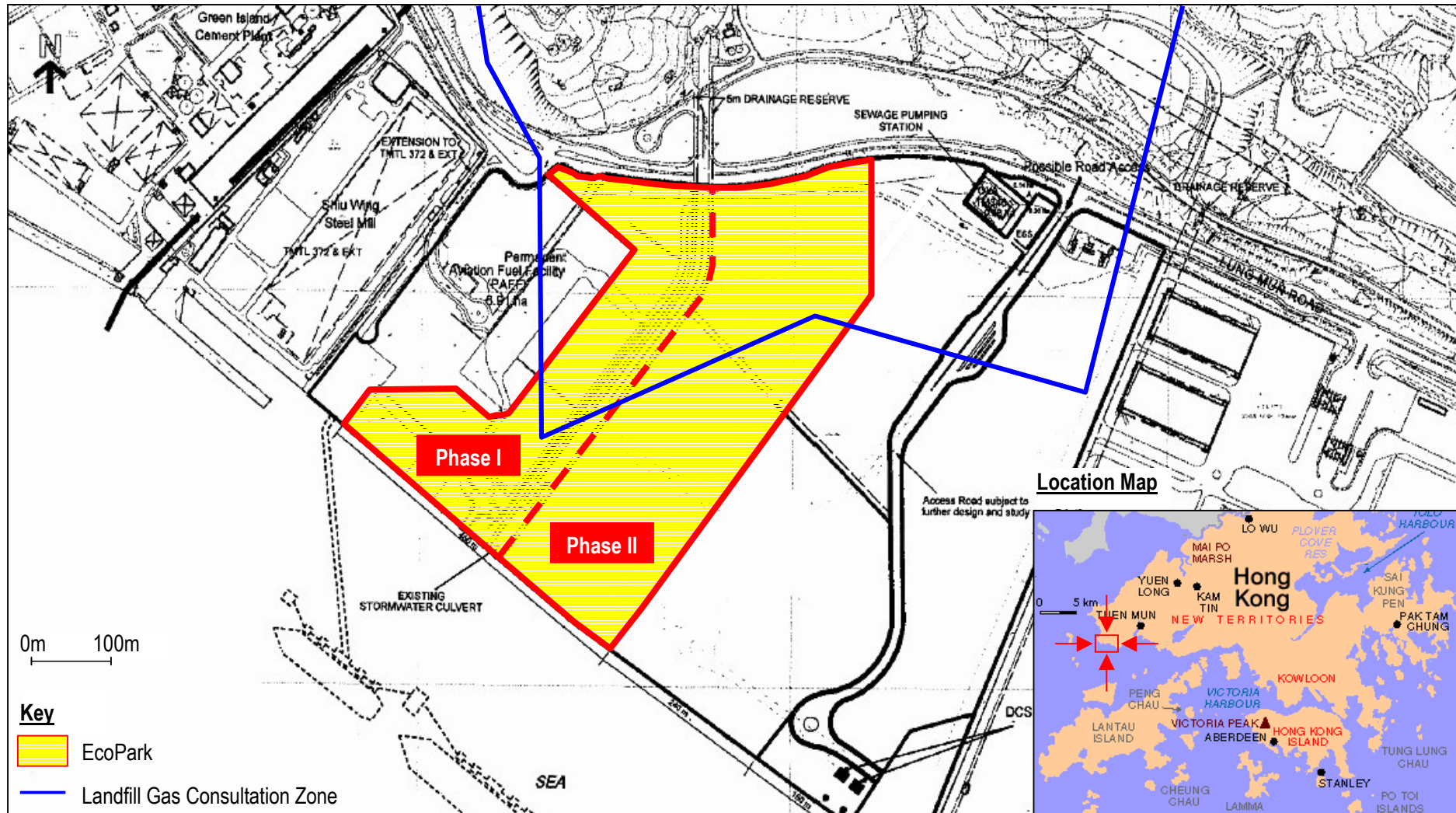


Figure 1-1 Location of EcoPark in Tuen Mun Area 38

2 Basic Project Information

2.1 Overview

In the document "A Policy Framework for the Management of Municipal Solid Waste (2005-2014)" the Government set out a comprehensive policy to support the recycling industry. This included allocating suitable land, encouraging research and development, introducing environmental legislation and providing effective support measures. To this end, EcoPark is a key element that aims to promote the local recycling industry and jump-start a circular economy to provide a sustainable solution to our waste problems. By encouraging and promoting the reuse, recovery and recycling of our waste resources and returning them to the consumption loop, EcoPark will help realize the full potential of the local recycling industry and alleviate the heavy reliance on the export of recyclable materials recovered from Hong Kong.

EcoPark is to be developed in two phases at a site in Tuen Mun Area 38 (see **Figure 1-1**). The construction contract for EcoPark – *EP/SP/52/06 Development of EcoPark in Tuen Mun Area 38* – was awarded to Kaden Construction in June 2006 by the Environmental Protection Department (EPD). This contract covers development of Phase I (ongoing) and extends to Phase II, anticipated to be developed in 2009.

In November 2006, the seven-year contract for the operation of EcoPark – *EP/SP/53/06 Provision of Management Services for EcoPark in Tuen Mun Area 38* – was awarded to Serco Guardian JV (SGJV) by EPD. SGJV, the "Operator" of EcoPark have engaged Hyder Consulting as their Environmental Team (ET) to carry out the Environmental Monitoring and Audit (EM&A) required by the EM&A Manual in accordance with the conditions of the Environmental Permit.

2.2 SGJV Organisation

Organisation of SGJV is shown in **Figure 2-1**, below.

2.3 Operation Programme

As end of April 2008, no tenants have yet commenced recycling activities within their lots and so there is no operation programme to report at this time. Three tenants, Hong Kong Hung Wai Wooden Board Company, Champway Technology Limited and Li Tong Group have commenced preparatory works within their lots but have not yet commenced recycling activities.

2.4 EM&A Organisation

The EM&A is carried out predominantly by the ET, but SGJV and the Independent Environmental Checker (IEC) are also involved. **Figure 2-2**, below, illustrates the EM&A organisation:

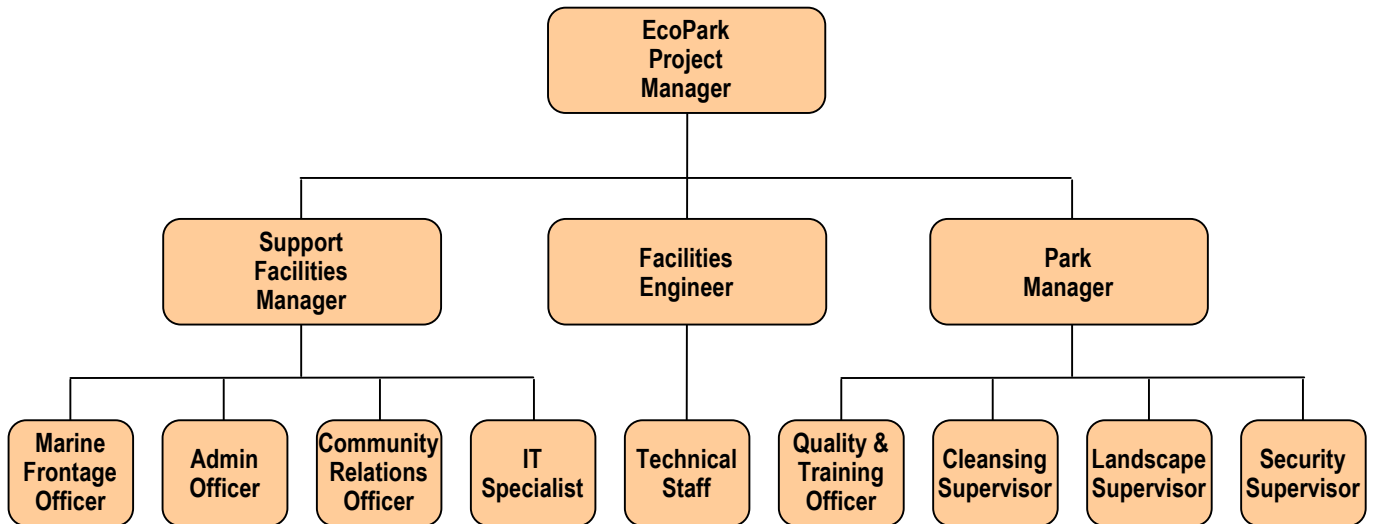


Figure 2-1 SGJV Organisation

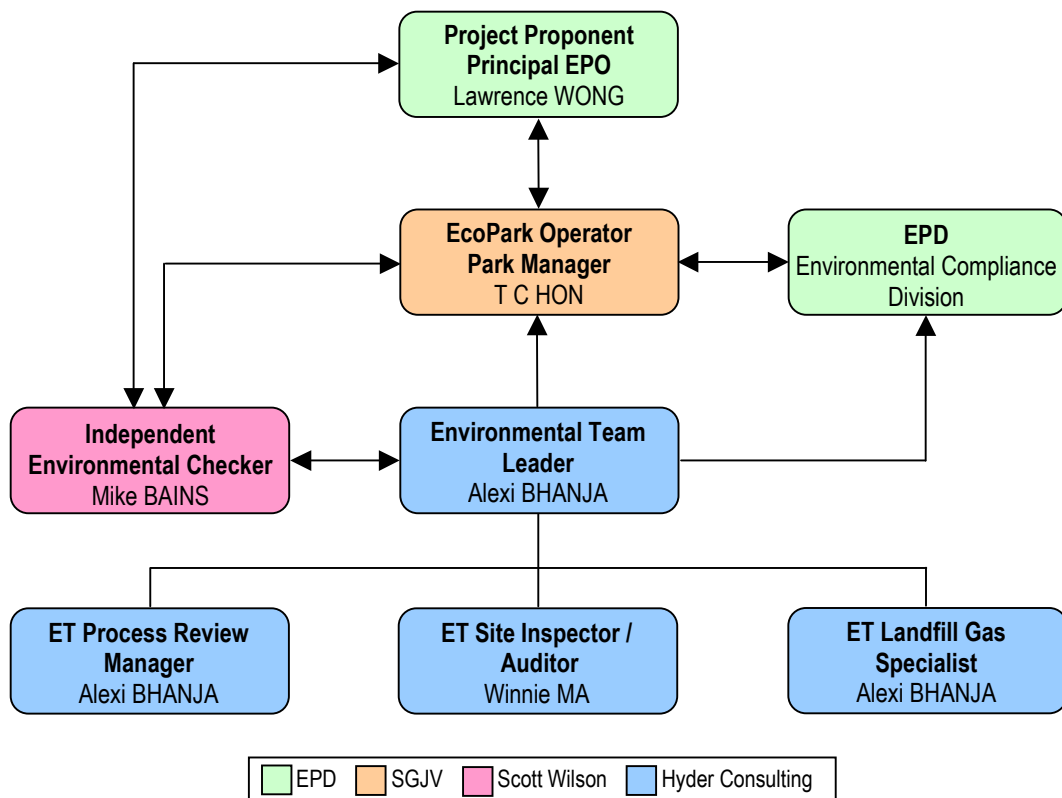


Figure 2-2 EM&A Organisation

3 Summary of EM&A Requirements

3.1 Monitoring Parameters

The following parameters are required to be monitored as part of the operation phase EM&A programme:

- **Landfill Gas (LFG).** Following construction, routine monitoring is required at service voids and utility boxes (locations to be agreed). Routine monitoring shall be carried out on a quarterly basis, however, should EPD alert the Operator that high LFG levels had been detected during monthly monitoring under the Siu Lang Shui Landfill restoration contract, then the Operator may be required to increase LFG monitoring to monthly until such time as EPD inform the Operator that quarterly monitoring can be resumed.

Since operation phase LFG monitoring is required “following construction” and construction is not yet completed, operation phase LFG monitoring is not yet required to be carried out. It should be noted that construction phase LFG monitoring is ongoing and is reported in the Monthly EM&A Reports prepared by the construction contractor’s ET. These reports can be downloaded from:

http://www.epd.gov.hk/eia/english/register/index8/vcp2212006_content.html

3.2 Environmental Quality Performance Limits and EAP

The Action/Limit Levels and Event Action Plan (EAP) for LFG are shown below in **Table 3-1**, below. These refer to LFG detected in excavations, utilities and any enclosed on-site areas.

Parameter	Level	Action
Oxygen (O ₂)	Action Level <19% O ₂	Ventilate trench/void to restore O ₂ to > 19%
	Limit Level <18% O ₂	Stop works Evacuate personnel/prohibit entry Increase ventilation to restore O ₂ to > 19%
Methane (CH ₄)	Action Level >10% LEL	Post "No Smoking" signs Prohibit hot works Increase ventilation to restore CH ₄ to <10% LEL
	Limit Level >20% LEL	Stop works Evacuate personnel/prohibit entry Increase ventilation to restore CH ₄ to <10% LEL
Carbon Dioxide (CO ₂)	Action Level >0.5% CO ₂	Ventilate to restore CO ₂ to < 0.5%
	Limit Level >1.5% CO ₂	Stop works Evacuate personnel / prohibit entry Increase ventilation to restore CO ₂ to <0.5%

Table 3-1 Action Levels, Limit Levels and Event and Action Plan for LFG

No other A/L Levels or EAPs are specified in the EM&A Manual for operation phase EM&A.

3.3 Environmental Audit of Non-monitored Parameters

Site inspections provide a direct means to trigger and enforce the specified environmental protection and pollution control measures and shall be undertaken routinely by the ET to inspect operational practice to ensure appropriate environmental protection and pollution control mitigation measures are implemented.

Regular site inspections shall be carried out by the ET once per month, and he shall be accompanied by the IEC once per quarter (on the same inspection). *Ad hoc* site inspections shall also be carried out if significant environmental problems are identified. Inspections may also be required subsequent to receipt of an environmental complaint, or as part of the investigation work, as specified in the EAP.

The following parameters are required to be audited as part of the operation phase EM&A programme:

- Air Quality
- Water Quality
- Waste Management
- Land Contamination

3.4 Environmental Mitigation Measures

Environmental mitigation measures applicable to the operation phase EM&A as stated in the Implementation Schedule are summarised in **Appendix 1**.

3.5 Environmental Requirements in Tenancy Agreements

Environmental requirements specified in tenancy agreements are summarised in **Appendix 2**.

4 Operation Status

Figure 4-1 shows the location of the lots within EcoPark, the tenancy numbers and the names of the tenants.

4.1 Tenants and Processes – First Batch

On 7 May 2007 the Director of Environmental Protection signed tenancy agreements with the successful bidders of the three lots in the first batch of the EcoPark Phase I. The successful bidders were:

- Hong Kong Telford Envirotech Group Limited
- Jets Technics Limited

- Hong Kong Hung Wai Wooden Board Company

The tenancy agreement provides for the possession of the lot to be given to the tenant within three months and that the tenant shall commence waste recovery and/or recycling and/or reprocessing within their lot within twelve months from the date on which possession of the lot was given. Possession of lots was given on 14 May 2007 and so recycling activities should commence by 13 May 2008 to the satisfaction of Director of Environmental Protection.

4.1.1 Tenancy EP06-032

- Lot Size: Approx. 5,000m²
- Activity: Recycling of Waste Plastics
- Tenant: None

In December 2007, EPD terminated the tenancy with the incumbent tenant, Hong Kong Telford Envirotech Group Limited, because of its failure to submit the performance bond required in the tenancy agreement. Re-tendering of this lot is already underway – see **Section 4-3**.

4.1.2 Tenancy EP06-033

- Lot Size: Approx. 9,500m²
- Activity: Recycling of Waste Vehicle Tyres
- Tenant: None

In March 2008, EPD terminated the tenancy with the incumbent tenant, Jets Technics Limited, because they failed to pay rent starting from 1 January 2008. Re-tendering of this lot will be arranged in due course.

4.1.3 Tenancy EP06-034

- Lot Size: Approx. 5,000m²
- Activity: Recycling of Waste Wood
- Tenant: Hong Kong Hung Wai Wooden Board Company

The tenant has commenced preparatory works within their lot but have not yet commenced recycling activities. The tenant submitted plans to Buildings Department (BD) at the end of March 2008 and proposes to install machinery within the lot by mid- 2008. The endorsed Process Review Checklist is shown in Appendix 3.

4.2 Tenants and Processes – Second Batch

Tender invitation for the tenancies of the second batch of lots for recycling of designated materials in EcoPark Phase I closed on 9 October 2007. The designated materials for the three lots comprised organic waste, waste electrical and electronic equipment (WEEE) and waste plastics.

Two of the tenancies (for recycling of organic waste and WEEE) were announced on 21 December 2007. No conforming bid was received for the third lot specified for the recycling of plastic. Possession of lots was given on 15 January 2008 and so recycling activities should commence by 14 January 2009 to the satisfaction of Director of Environmental Protection

4.2.1 Tenancy EP07-01

- Lot Size: Approx. 4,000m²
- Activity: Recycling of Waste Plastics
- Tenant: None

No conforming bid was received and re-tendering of this lot already underway – see **Section 4-3**.

4.2.2 Tenancy EP07-02

- Lot Size: Approx. 6,500m²
- Activity: Recycling of WEEE
- Tenant: Li Tong Group

The tenant has commenced preparatory works within their lot but have not yet commenced recycling activities. Construction of a temporary site office is underway. Li Tong had submitted building plans to Building Department on 30 April 2008. The endorsed Process Review Checklist is shown in Appendix 3.

4.2.3 Tenancy EP07-03

- Lot Size: Approx. 6,000m²
- Activity: Recycling of Organic Waste (Waste Cooking Oil)
- Tenant: Champway Technology Limited

The tenant has commenced preparatory works within their lot but have not yet commenced recycling activities. As this process was not assessed in the original EIA Report, a Design Audit is being prepared by the ET for this process and will be completed by mid-May 2008. The endorsed Process Review Checklist is shown in Appendix 3.

Construction of a temporary site office has been completed and preparation of BD submissions is underway. The temporary site office contains basic research and development facilities.

The height of the temporary site office is around 7m. As the construction of PAFF will be completed in 2010, therefore the height limits of PAFF as listed in the EIA Report Table 13.2 are not applicable before the operation of PAFF.

4.3 Tenants and Processes – Third Batch

Tender invitation for the tenancies of the third batch of lots for recycling of designated materials in EcoPark Phase I closed on 19 March 2008. Tender assessment is currently in progress.

4.4 Throughput Statistics

As of 30 April 2008, no tenants have yet commenced recycling activities within their lots and so there are no throughput statistics to report at this time.

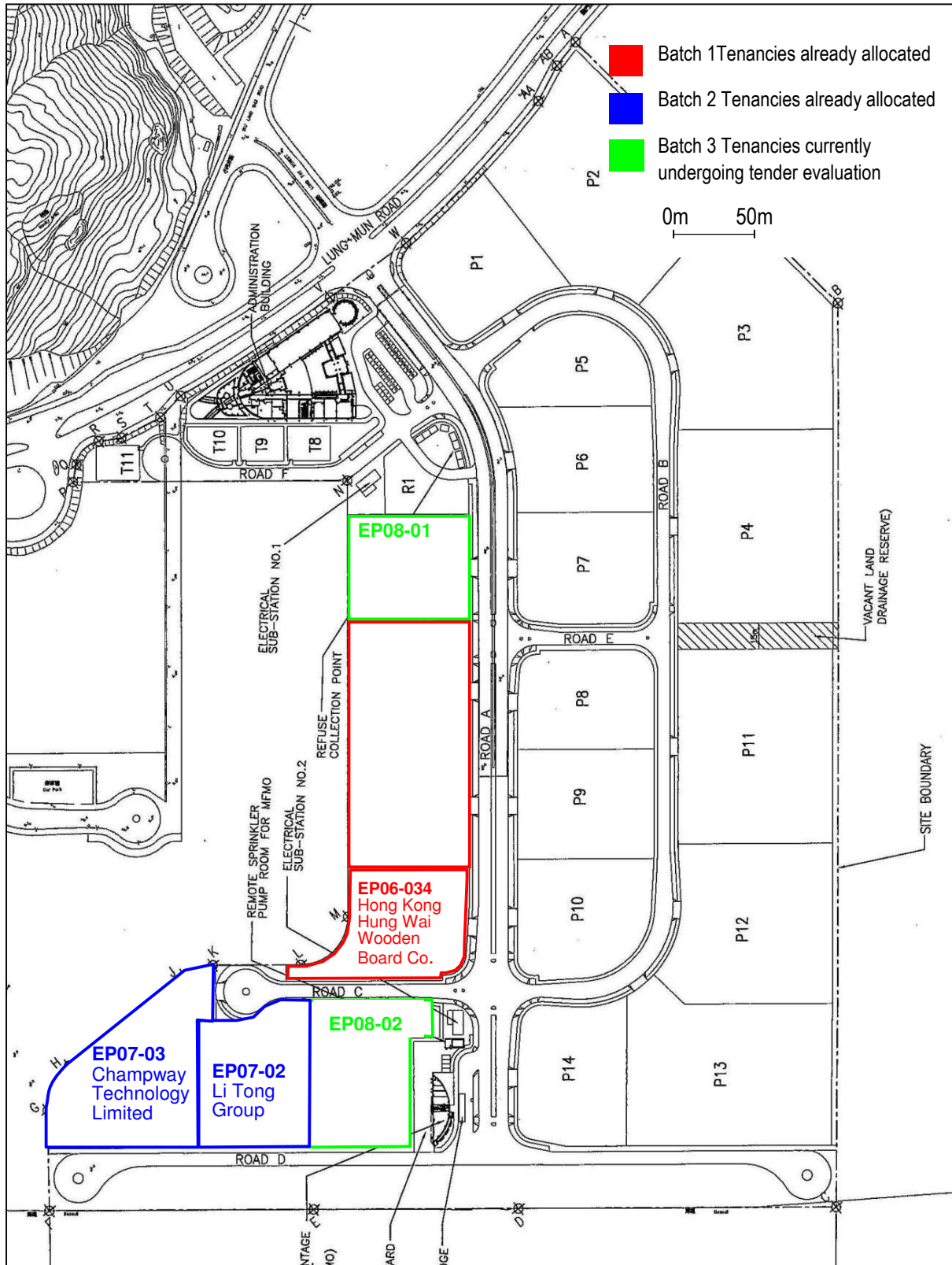


Figure 4-1 Lot Usage Within EcoPark

5 Implementation Status of Environmental Protection Measures

Environmental mitigation measures applicable to the operation phase EM&A as stated in the Implementation Schedule are summarised in **Appendix 1**. Environmental requirements specified in Tenancy Agreements are summarised in **Appendix 2**.

As of 30 April 2008, no tenants have yet commenced recycling activities within their lots and so no environmental protection measures yet need to be implemented.

6 Monitoring Results

Only LFG is required to be monitored on a quarterly basis. However, since operation phase LFG monitoring is only required “following construction” and construction is not yet completed, operation phase LFG monitoring is not yet required to be carried out.

7 Waste Generation Statistics

As of 30 April 2008, no tenants have yet commenced recycling activities within their lots and so there are no waste generation statistics to be reported at this time.

8 Summary of Environmental Audit

8.1 February 2008

The environmental audit was carried out by the ET Leader on 29 February 2008. At this time, construction of EcoPark Phase I was ongoing and no tenants were yet carrying out recycling activities within EcoPark. As such, there were no processes to be audited. No significant observations were made.

8.2 March 2008

The environmental audit was carried out by the ET on 31 March 2008. At this time, construction of EcoPark Phase I was ongoing. Site preparation was observed in EP07-03 and trial pits (for ground investigation, requested by EPD) were observed in EP08-01 and EP06-034, respectively.

Soil debris were observed deposited on public roads (as shown in **Photograph 8-1**) as no provision of wheel washing facilities were observed at site entrances of

lots EP07-03, EP08-01 and EP06-034. Provisions of wheel washing facilities were requested to prevent soil debris deposited on the road.



Photograph 8-1 Soil Debris on the Road Outside EP08-01

An oil drum without drip tray was observed in the EP07-03, as shown in **Photograph 8-2**. Provision of drip tray was requested to by the ET to prevent land contamination.



Photograph 8-2 No drip tray was provided to the oil drum in EP07-03

8.3 April 2008

The environmental audit was carried out by the ET Leader and IEC's Representative on 25 April 2008. At this time, construction of EcoPark Phase I was ongoing (although close to completion) and no tenants were yet carrying out recycling activities within EcoPark. As such, there were no processes to be audited. No significant observations were made.

9 Complaints

As of 30 April 2008, no tenants have yet commenced recycling activities within their lots and no complaints have been received related to recycling activities.

10 Conclusions

As of 30 April 2008, no tenants have yet commenced recycling activities within their lots and so there are no conclusions to draw relating to the operation of the operation phase EM&A programme at this time.

Appendix 1

Environmental Mitigation Measures (from the Implementation Schedule)

EIA Ref.	EM&A Ref.	Environmental Protection Measures Identified in the Implementation Schedule that are Applicable to the Operation Phase of EcoPark	Location / Duration of Measures / Timing of Completion of Measures	Implementation Agent	Relevant Legislation and Guidelines
----------	-----------	---	--	----------------------	-------------------------------------

General

5.5.23 to 5.5.25, 10.2.24 & 10.2.37	4.2.5 to 4.2.8	The Operator shall develop and implement an Emergency Response Plan (ERP) that lists the procedures to be followed in case of fire, fuel or chemical spillage or other emergency within the EcoPark.	Throughout the duration of the operation.	Operator	
12.2	7.2	No process shall be allowed to operate within EcoPark without approval from WFBU. Approval will be based on the ten-step Process Review, which may include a Design Audit if deemed to be necessary.	Throughout the duration of the operation.	ET IEC Project Proponent	
	8.1.2	All reports (including Process Review Checklists and any Design Audits) shall be prepared and certified by the ET, verified by the IEC and approved by the Project Proponent.	Throughout the duration of construction works until construction is substantially completed. Throughout the duration of the operation.	ET IEC Project Proponent	
12.3	7.3	The Operator shall prepare and implement an Environmental Management Plan (EMP) to define mechanisms for achieving the environmental requirements specified in the EIA, EP and in statutory regulations.	Throughout the duration of the operation.	Operator	

Air Quality

13.2		The Operator shall ensure that the EcoPark "base case" assumptions for air quality shown in Table 13.1 of the Final EIA Report are met by tenants, as a whole.	Throughout the duration of the operation.	Operator	Table 13.1 of the Final EIA Report
------	--	--	---	----------	------------------------------------

Water Quality

5.4.11 & 5.6.7		To minimise the chance of accidental spillage during loading and unloading, and thereby reduce marine water quality impacts, well established cargo handling guidelines should be followed.	Adjacent to EcoPark marine frontage when loading or unloading goods.	Operator Operators of bulk carriers	Sections 5 and 6 of <i>IMO Code of Practice for the Safe Loading and Unloading of Bulk Carriers</i>
5.5.19		Contaminated water collected in the surface drainage systems shall be treated at the WTF or other appropriate treatment facility.	Within EcoPark throughout the life of the facility.	Operator	

EIA Ref.	EM&A Ref.	Environmental Protection Measures Identified in the Implementation Schedule that are Applicable to the Operation Phase of EcoPark	Location / Duration of Measures / Timing of Completion of Measures	Implementation Agent	Relevant Legislation and Guidelines
5.5.23 to 5.5.25	4.2.5 to 4.2.7	An Emergency Response Plan (ERP) will be formulated to address various accident scenarios. The ERP will be certified by the Environmental Team (ET) and verified by the Independent Environmental Checker (IEC) under the operation EM&A programme.	Within EcoPark throughout the life of the facility.	Operator	
5.6.4		For uncovered areas where recovery process identified as causing potentially high level of contamination are located, stop-logs will be installed in the perimeter drainage system to isolate contamination.	Within EcoPark throughout the life of the facility.	Operator	
	4.2.2	The ET should develop an audit checklist, with the agreement of the IEC, to ensure that each mitigation measure is implemented when appropriate and operated correctly when implemented.	Within EcoPark throughout the life of the facility.	ET with IEC	

Waste Management

6.8.7	5.2.4	The Operator should register with EPD as a chemical waste producer.	Within EcoPark throughout the life of the facility.	Operator	Waste Disposal (Chemical Waste) (General) Regulation
6.8.16		The dust collected by any air pollution control equipment installed by tenants must be tested to ensure compliance for landfill disposal.	Within EcoPark throughout the life of the facility.	Operator	Practice Note for disposal of dusty waste at landfill sites and the Admission Ticket System
6.8.18 & 6.8.22	5.2.4	Sludge will be disposed of at WENT landfill, or at any future dedicated sludge treatment facility. Sludge will be collected by a Licensed collector at regular intervals, as determined by the operation of the WTF	Within EcoPark throughout the life of the facility.	Operator	
6.8.21	5.2.4	Chemical wastes shall be stored in appropriate containers in a covered area. "No Smoking" signs will be clearly displayed to prevent accidental ignition of any flammable materials. Drip trays capable of storing 110% of the volume of the largest container will be used to mitigate possible leakage.	Within EcoPark throughout the life of the facility.	Operator	Code of Practice on the Packaging, Labelling and Storage of Chemical Wastes
	5.2.3 & 5.2.5	The ET should develop an audit checklist, with the agreement of the IEC, to ensure that each mitigation measure is implemented when appropriate and operated correctly when implemented.	Within EcoPark throughout the life of the facility.	ET with IEC	

EIA Ref.	EM&A Ref.	Environmental Protection Measures Identified in the Implementation Schedule that are Applicable to the Operation Phase of EcoPark	Location / Duration of Measures / Timing of Completion of Measures	Implementation Agent	Relevant Legislation and Guidelines
Prevention of Contaminated Land					
7.3.1	5.3.2	Any spillages of contaminating material shall be cleaned up immediately through the use of an absorbent. Any such used material should then be considered chemical waste and disposed of appropriately.	Within EcoPark throughout the life of the facility.	Operator	
7.3.3		Any areas within the lot to be used for recycling processes shall be concrete paved before recycling activities commence.	Within EcoPark throughout the life of the facility.	Operator	
7.3.5	5.3.2	<p>During operation, the greatest risk of land contamination will come from the storage of chemical wastes, therefore the following measures should be followed :</p> <ul style="list-style-type: none"> ▪ All chemical storage areas shall be provided with locks and be sited on sealed areas. The storage areas shall be surrounded by bunds with a capacity equal to 110% of the storage capacity of the largest tank to prevent spilled oil and chemicals from contaminating the ground. ▪ Management of chemical waste is implemented through the control of waste storage, labelling of waste, transportation and treatment of chemical waste at an appropriate facility. ▪ Chemical wastes will be collected, stored and disposed of in accordance with the Regulation. Disposal of other construction waste will be undertaken by Licensed contractors in accordance with applicable statutory requirements in the WDO. ▪ Chemical wastes shall be handled according to the relevant code of practice. Spent chemicals shall be stored and collected by an approved operator for disposal at a licensed facility in accordance with the relevant regulation. 	Within EcoPark throughout the life of the facility.	Operator	<p>Waste Disposal (Chemical Waste) (General) Regulation</p> <p>Code of Practice on the Packaging, Labelling and Storage of Chem Wastes</p> <p>Chemical Waste (General) Regulation</p>
	5.3.3	The ET should develop an audit checklist, with the agreement of the IEC, to ensure that each mitigation measure is implemented when appropriate and operated correctly when implemented.	Within EcoPark throughout the life of the facility.	ET with IEC	

EIA Ref.	EM&A Ref.	Environmental Protection Measures Identified in the Implementation Schedule that are Applicable to the Operation Phase of EcoPark	Location / Duration of Measures / Timing of Completion of Measures	Implementation Agent	Relevant Legislation and Guidelines
----------	-----------	---	--	----------------------	-------------------------------------

Landfill Gas

8.7.10 & 8.7.11	6.1.2	<ul style="list-style-type: none"> ▪ Alert workers and visitors of possible LFG hazards ▪ Prohibit smoking and open fires on site ▪ Conduct regular (quarterly) LFG monitoring at mobile offices, equipment stores, etc. 	Within EcoPark throughout the life of the facility.	Operator	
	6.4.3	Following construction, routine monthly monitoring may be required at service voids and utility boxes. The monitoring requirement and specific locations of monitoring points shall be established based on the findings of the monitoring carried out during construction (i.e. if no LFG is detected during construction then no routine monitoring is required). The need for continued monitoring shall, however, be reviewed through discussion with EPD.	Within EcoPark throughout the life of the facility.	Operator	

Hazard to Life

10.4.3		Building height limit within EcoPark shall be applied to structures within which people may work at elevated levels.	Within EcoPark throughout the life of the facility.	Operator	EIA Report Table 10.2
--------	--	--	---	----------	-----------------------

Landscape and Visual

9.4.4		It recommended that this commonality be promoted throughout EcoPark by the Operator and adopted by tenants, if practicable.	Within EcoPark throughout the life of the facility.	Operator	
-------	--	---	---	----------	--

Appendix 2

Environmental Requirements in Tenancy Agreements

GENERAL ENVIRONMENTAL RESPONSIBILITIES

- 9.1 The Tenant shall at its own cost(s) comply with and shall ensure that the Premises is used, designed, constructed, operated and maintained in accordance with:-
- (a) All relevant Ordinances, by-laws, regulations, statutory technical memorandums, codes of practice, rules, non-statutory guidance notes, schemes and abatement notices for the time being in force in Hong Kong including those relating to the environment and governing the control of any form of pollution (see specific Ordinances mentioned hereinbelow) and licensing requirements under relevant Ordinances and regulations.
 - (b) All information, mitigation measures, prohibitions, restrictions, recommendations and requirements under the Environmental Impact Assessment Report for Development of an EcoPark in Tuen Mun Area 38 with Appendices, i.e. the EIA Report (Register No.: AEIAR-086/2005) dated April 2005, the Final EM&A Manual dated April 2005, the application documents including all attachments (Application No. AEP-226/2005) and other relevant documents in the Register (or in any other places, any internet websites or by any other means as specified by the Director), including the prohibitions and mitigation measures for processes in Table 14.1 and the material throughputs, processes and remarks in Table B.1 of the EIA Report (in so far as applicable).
 - (c) All information, conditions, submissions, mitigation measures, orders, notices, requirements, prohibitions, restrictions and time limits under the Environmental Permit No. EP-226/2005 as amended by the Variation of Environmental Permit – Application No. VEP-221/2006 (including updated information about the Permit, any amended permit and any further permit) and all mitigation measures recommended and to be recommended in submissions that shall be deposited with or approved by the Director as a result of permit conditions contained in the Environmental Permit No. EP-226/2005 as amended by the Variation of Environmental Permit – Application No. VEP-221/2006 (including updated information about the Permit, any amended permit and any further permit). The Tenant shall refer to, inter alia, Conditions 4.1 to 4.14 (and Annexes A and B) and Conditions 3.7 and 3.8 (and Figures 2 and 3) of the Environmental Permit No. EP-226/2005 as amended by the Variation of Environmental Permit – Application No. VEP-221/2006 regarding measures to mitigate air quality impact, measures to mitigate hazard to life impact, measures to prevent land contamination, measures to mitigate landfill gas hazard, maintenance of landscape and visual measures (see also hereinbelow regarding Condition 5 of the Environmental Permit and specified Ordinances).
 - (d) All information, conditions, submissions, mitigation measures, orders, notices and requirements under on going surveillance and monitoring activities during all stages of the Project and during the tenancy under the Tenancy Agreement (e.g. any additional mitigation measures recommended and to be recommended under the Process Review and Design Audit (carried out and to be carried out in accordance with the EM&A Manual) for various environmental impacts including, but not limited to, noise pollution, air quality, hazard to life, landfill gas hazard, landscape and visual measures, waste management and land contamination).

- (e) All recommendations referred to in the documents of the EIAO Register which are not expressly referred to in Environmental Permit No. EP-226/2005 as amended by the Variation of Environmental Permit – Application No.VEP-221/2006 and any amended Environmental Permit (unless expressly excluded or impliedly amended in the Environmental Permit No. EP-226/2005 as amended by the Variation of Environmental Permit – Application No.VEP-221/2006 and any amended Environmental Permit).
- 9.2 Further to Condition Nos. 6 and 8 hereinabove, the Tenant shall at its own cost provide relevant environmental monitoring data, information, documents and assistance to the Director and/or the Environmental Protection Department and shall permit authorised representatives of the Environmental Protection Department to access, inspect, take samples and monitor the Premises and operations for the Process Review and the Design Audit carried out and/or to be carried out pursuant to Conditions 4.1 and 5 of the Environmental Permit No. EP-226/2005 as amended by the Variation of Environmental Permit – Application No.VEP-221/2006 (and any updated Permit, amended permit and further permit).
- 9.3 If the Tenant's operations (i.e. activities and facilities for recovery and/or recycling and/or reprocessing) are not covered by the EIA Report and/or deviate from the development parameters mentioned in inter alia the EIA Report, the Environmental Permit No. EP-226/2005 as amended by the Variation of Environmental Permit – Application No.VEP-221/2006 (including the parameters at Annex A) and/or any environmental licence (e.g. the Water Treatment Facility (“WTF”) Discharge Licence), and if additional mitigation measures are not available or are not effective in the opinion of the Director, to ensure compliance with the EIA Report, the Environmental Permit No. EP-226/2005 as amended by the Variation of Environmental Permit – Application No.VEP-221/2006 (including any updated Permit, amended permit and further permit) and the relevant environmental licence(s), the Tenant shall comply with any modified parameters and/or the Tenant shall immediately modify its operations in such a way that the findings and requirements of the EIA Report, the Environmental Permit No. EP-226/2005 as amended by the Variation of Environmental Permit – Application No.VEP-221/2006 (including any updated Permit, amended permit and further permit) and the environmental licence(s) are complied with and shall immediately cease to continue the offending part of the operations or activity in question.
- 9.4 The Tenant shall at its own cost(s) apply for, obtain, renew, maintain and comply with all the relevant licences related to compliance with all relevant Ordinances, by-laws, regulations, statutory technical memorandums, codes of practice, rules, non-statutory guidance notes, schemes, abatement notices and the environmental permits for the time being in force in Hong Kong (including those relating to the environment and governing the control of any form of pollution). The Tenant shall obtain, renew and comply with all the said licences within the relevant time limits (in any event, within one (1) calendar month of the date of signing and/or execution of the Tenancy Agreement), shall comply with all abatement notices, orders, directions and requests of the relevant authorities and public officers and shall be responsible for paying all relevant fees, costs, fines and penalties.
- 9.5 The Tenant shall not do anything or omit to do anything which would cause, contribute to or involve a breach or potential breach by the Director relating to any of the matters mentioned in Conditions 9.1 to 9.4 hereinabove (and other Conditions hereinbelow).

- 9.6 The Tenant shall fully indemnify the Government and/or the Director for any fees, costs, damages, expenses, fines, penalties, losses and claims arising (a) out of any breach of any of the matters mentioned in inter alia Conditions 9.1 to 9.4 hereinabove (and other Conditions hereinbelow) or (b) from the use of the Premises or (c) out of any works carried out at any time during the term to or at the Premises or (d) out of anything now or during the term attached to or projecting from the Premises or (e) from any neglect or default by the Tenant or by its respective servants or agents or by any express licensee of the Tenant.

SPECIFIC ENVIRONMENTAL RESPONSIBILITIES

Air Pollution

10. Save with an appropriate exemption under the Air Pollution Control Ordinance (Cap. 311 of the Laws of Hong Kong) any regulations made thereunder and any amending legislation, the Tenant shall not install or permit or suffer to be installed upon the Premises or any part thereof or any building(s) or structure(s) or part of any building(s) or structure(s) erected or to be erected thereon any furnace, oven, chimney or flue or any other combustion equipment or use or permit or suffer to be used any fuel or any method or process of manufacture or treatment that might in any circumstance result in, cause or contribute to the discharge or emission of any pollutant or any noxious, harmful or corrosive matter, whether it be in the form of gas, smoke, liquid, solid or otherwise (including but not limited to air pollutant as defined in Section 2 of the Air Pollution Control Ordinance (Cap. 311 of the Laws of Hong Kong)), which exists or which is imminent, without the prior written approval of the Director.
11. No alteration to the installation and method of manufacture shall be made without the prior written consent of the Director. In any event, the Tenant shall at its own cost(s) comply with, inter alia, Conditions 4.2 to 4.7 and Annex A of the Environmental Permit No. EP-226/2005 as amended by the Variation of Environmental Permit – Application No. VEP-221/2006 regarding design, installation and operation of chimney, location of fresh air intakes and use of ultra-low sulphur or other cleaner fuel(s) as agreed by the Director (and the conditions of any updated Permit, amended permit and further permit regarding measures to mitigate air quality impact), good practices and relevant provisions of the EIA Report and Final EM&A Manual.

Noise Pollution

12. The Tenant shall take all necessary measures as may be required by and to the satisfaction of the Director to ensure that the operation of all plant and equipment, installed or used on the Premises or in any building(s) or structure(s) or any part of any building(s) or structure(s) erected or to be erected thereon, will not result, not cause and/or will not contribute any noise (which exists or which is imminent) which disturbs or annoys the residents or occupiers of any adjoining or neighbouring lot or lots or premises, or causes and/or contributes to disturbance to the general public under the Noise Control Ordinance (Cap. 400 of the Laws of Hong Kong) any regulations made thereunder and any amending legislation.
13. The decision of the Director as to whether any such plant and equipment are causing disturbance or annoyance as aforesaid shall be final and binding on the Tenant.

Waste Management

14. The Tenant shall not permit, allow or suffer any fuel or chemical and any sewage, waste water or effluent containing sand, cement, silt or any suspended or dissolved material to flow, escape or run from the Premises onto any adjoining land or allow any waste matter which does not form part of the recovery and/or recycling and/or reprocessing operation or is not part of the final product of such operation to be deposited, kept, held or stored anywhere within the Premises and other areas of EcoPark. The Tenant shall at its own cost(s) have all such matters and all waste arising from recycling activities, chemical waste arising from maintenance of plant and equipment, sewage sludge (from WTF) and general daily waste from the operation removed from the Premises or any building(s) or structure(s) or any part of any building(s) or structure(s) erected or to be erected thereon in a proper manner to the satisfaction of the Director.
15. In any event, the Tenant shall at its own cost(s) comply with, inter alia, Conditions 4.11 and 4.12 of the Environmental Permit No. EP-226/2005 as amended by the Variation of Environmental Permit – Application No.VEP-221/2006 regarding paving all areas of the Premises with concrete/using concrete hardstanding and siting all fuel tanks and chemical storage areas on the specified sealed areas, respectively (and comply with the conditions of any updated Permit, amended permit and further permit regarding measures to prevent land contamination). The Tenant shall at its own cost(s) comply with relevant provisions of the Waste Disposal Ordinance (Cap.354 of the Laws of Hong Kong) good practices and relevant provisions of the EIA Report and Final EM&A Manual.

Water Pollution

16. In the event that the Tenant produces, generates, permits, causes, allows or suffers any discharge which is subject to control under the Water Pollution Control Ordinance (Cap. 358 of the Laws of Hong Kong) any regulations made thereunder and any amending legislation, and is not covered by a WTF Discharge Licence issued under the Water Pollution Control Ordinance (Cap. 358 of the Laws of Hong Kong) the Tenant shall apply to the Director for a licence and comply with the terms and conditions stipulated in the licence and the WTF Discharge Licence at the Tenant's own cost(s). Otherwise, the Tenant is not allowed to discharge directly or indirectly or to produce, generate, permit, cause, allow or suffer any discharge into any public sewer, storm-water drain, channel, stream-course, sea or any area inside or outside the Premises any trade effluent or foul or contaminated water or cooling or hot water. Subject to the said licence from the Director and WTF Discharge Licence, the Tenant shall at its own cost(s) separate, collect, discharge and send all process or industrial wastewater to the WTF for treatment to the standard required for discharge into a sewer leading to the sewage treatment works at Pillar Point or other treatment works specified in the licence.
17. Subject to obtaining advance written approval of the Director, the Tenant shall at its own cost(s) provide, install, operate and maintain its own waste water pre-treatment plants within the Premises if such process or industrial wastewater could not meet the influent limits / exceeds the maximum influent criteria of the WTF (in accordance with paragraph 7.2.9 of the Final E&MA Manual). The Tenant shall at its own cost(s) separate, collect, discharge and send all domestic wastewater (i.e. other than process or industrial wastewater) to the Pillar Point Sewage Treatment Works directly for treatment or other treatment works specified in the licence.

18. In any event, the Tenant shall prevent any spilled materials from entering the surface water drainage system and prevent contamination of the sea at its own cost(s) by, inter alia, providing, installing, operating and maintaining stop-logs or interceptors in the surface water drainage system and at the marine frontage area, respectively, or as required by the licence. The Tenant shall at its own cost comply with relevant provisions of the Dumping at Sea Ordinance (Cap 466 of the Laws of Hong Kong) good practices and relevant provisions of the EIA Report and Final EM&A Manual.

Hazard to Life Impact

19. To mitigate hazard to life impact, the Tenant shall comply with, inter alia, Conditions 4.8 to 4.10 of the Environmental Permit No. EP-226/2005 as amended by the Variation of Environmental Permit – Application No.VEP-221/2006 (and comply with the conditions of any updated Permit, amended permit and further permit regarding measures to mitigate hazard to life impact) and shall not:-
- (a) Bring, keep, store or transport chlorine within the Premises and other areas of EcoPark;
 - (b) Bring, keep, store, locate or transport dangerous goods, substances and fuels supporting combustion including oxygen, acetylene, hydrogen peroxide, rubber tyres and diesel within 10 metres from the boundary of the site of EcoPark; and
 - (c) Exceed the building height restrictions for buildings on the Premises which are on/near the western boundary of the site of EcoPark as mentioned in Annex B to the Environmental Permit No. EP-226/2005 as amended by the Variation of Environmental Permit – Application No.VEP-221/2006 (including any updated Permit, amended permit and further permit).

Landfill Gas Hazard

20. To mitigate landfill gas hazard, the Tenant shall at its own cost(s) comply with, inter alia, Condition 4.13 of the Environmental Permit No. EP-226/2005 as amended by the Variation of Environmental Permit – Application No.VEP-221/2006 regarding raising clear of the ground all buildings and enclosed structures as specified in inter alia Condition 3.7 (and comply with the conditions of any updated Permit, amended permit and further permit regarding measures to mitigate hazard to life impact).

Landscape and Visual Impacts

21. To mitigate landscape and visual impacts, the Tenant shall at its own cost(s) comply with, inter alia, Condition 4.14 of the Environmental Permit No. EP-226/2005 as amended by the Variation of Environmental Permit – Application No.VEP-221/2006 regarding maintaining landscape, planting, treatment and mitigation measures as specified in inter alia Condition 3.8 and Figure 3 (and comply with the conditions of any updated Permit, amended permit and further permit regarding measures to mitigate landscape and visual impacts).

Appendix 3

Endorsed Process Review Checklists

EcoPark Process Review Checklist

General Details

PRC No. 001 _____ (PRC 1 of 1)

Tenant Ref. No. _____

Tenant Name Li Tong Group

EcoPark Lot No. EP07-02

Related Processes PRC _____

Process Overview and Throughput

Material Type WEEE

Process Name Computer / Electronics Recovery

Process Specifics Separation and Testing
Shredding and Separation (Electromagnetic and Electronics)

Details Attached Yes (attached) No, not required

Associated Material Throughput (incl. DGs, if any)

Material	In/Out	Throughput (tonnes/yr)
WEEE	In	1,200

Throughput < EIA Limit? Yes No, exceeds by _____

Risk Assessment Yes (attached) No, not required

Impact Assessment

Process has already been assessed in the EIA (from EIA Table 14.1):

Impacts to:

AQ Yes No Fugitive dust control required

WQ Yes No None

WM Yes No Minimal wastage of unusable components

CL Yes No Metal fines controlled by APC equipment

Note : AQ=Air Quality | WQ = Water Quality | WM = Waste Management | CL=Contaminated Land

EcoPark Process Review Checklist

Impact Assessment (continued)

Proposed Mitigation The tenant has proposed to install air pollution control equipment to control dust and metal fines. Also the recovery rates for ferrous, coppers, fibres, plastics and aluminium are anticipated to be more than 90%, which will result in a very small amount of waste generation. Unusable (residual) WEEE will be in the order of 10 tonnes/month.

Includes Chimney ? Yes No

If Yes, Complies with EIA Table 13.1? Yes No Pending Confirmation

Process has not been assessed in the EIA but is unlikely to warrant a full Design Audit because:

Summary

- Process meets EP Conditions
- ❶ Process meets EIA requirements (see above).
- ❷ Process is unlikely to warrant a full Design Audit (see above)
- No unacceptable environmental impacts – allow process to operate
- ❸ Unacceptable/undetermined environmental impacts – do not allow process to operate until Design Audit has been completed and approved

Note : ❶, ❷ and ❸ relate to the process review flowchart, EIA Report Figure 12.1

Sign-off Requirements

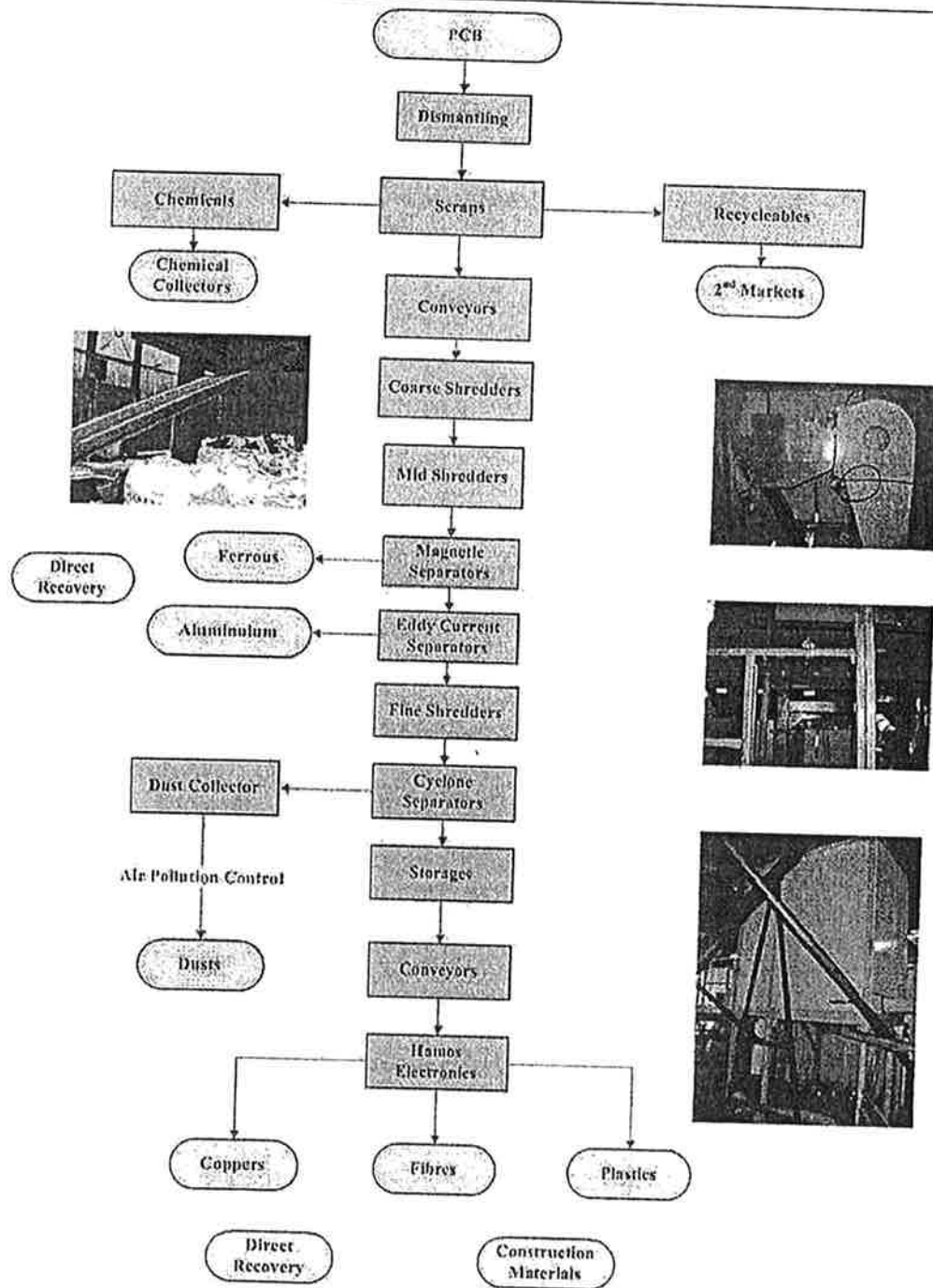
	ET	IEC	EPD	Operator
Name	Hyder Consulting	Scott Wilson	Waste Reduction & EcoPark Group	Serco Guardian Joint Venture
Sign-off	Certified	Verified	Approved	Tenant Advised
Date				
Signed	Alexi BHANJA	Mike BAINS	Lawrence WONG	T C HON
Role	ET Leader	IEC	Principal EPO	Park Manager
Signature				



Recycling of PCB/ PCBA

Li Tong's Electrostatic Separator hamos KWS (Hamos), which is the unique recycling plant in Hong Kong, shall separate the metals and non-metals through mechanical and electromagnetic means. The work flows of the Hamos are as follows:

Work Flow of Electrostatic Separator hamos KWS



EcoPark Process Review Checklist

General Details

PRC No. 002 (PRC 1 of 2)
 Tenant Ref. No. _____
 Tenant Name Champway Technology Limited
 EcoPark Lot No. EP07-03
 Related Processes PRC _____

Process Overview and Throughput

Material Type Organic waste
 Process Name Waste cooking oil recycling into biodiesel
 Process Specifics Raw material extraction, neutralization,
separation and distillation
 Details Attached Yes (attached) No, not required

Associated Material Throughput (incl. DGs, if any)

Material	In/Out	Throughput (tonnes/yr)
Organic waste (waste cooking oil and grease trap waste)	In	40,000
Biodiesel	Out	To be determined in Design Audit
Glycerin	Out	
Inorganic waste	Out	

Throughput < EIA Limit? Yes No, exceeds by _____
 Risk Assessment Yes (attached) No, not required

Impact Assessment

Process has already been assessed in the EIA (from EIA Table 14.1):

Impacts to:

AQ Yes No Pending confirmation in Design Audit
 WQ Yes No Pending confirmation in Design Audit
 WM Yes No Pending confirmation in Design Audit
 CL Yes No Pending confirmation in Design Audit

Note : AQ=Air Quality | WQ = Water Quality | WM = Waste Management | CL=Contaminated Land

EcoPark Process Review Checklist

Impact Assessment (continued)

Proposed Mitigation The tenant has proposed to use a pump truck to minimise odour emission, install air extraction system for collection of odourous gases and jacket pipes for minimization of fugitive dust emission. Byproduct and packaging would be reused. Sulphur-free biodiesel would be used as operation fuel, or induction heating from CLP. No wastewater treatment proposed.

Includes Chimney ? Yes No

If Yes, Complies with EIA Table 13.1? Yes No Pending Confirmation

Process has not been assessed in the EIA but is unlikely to warrant a full Design Audit because:

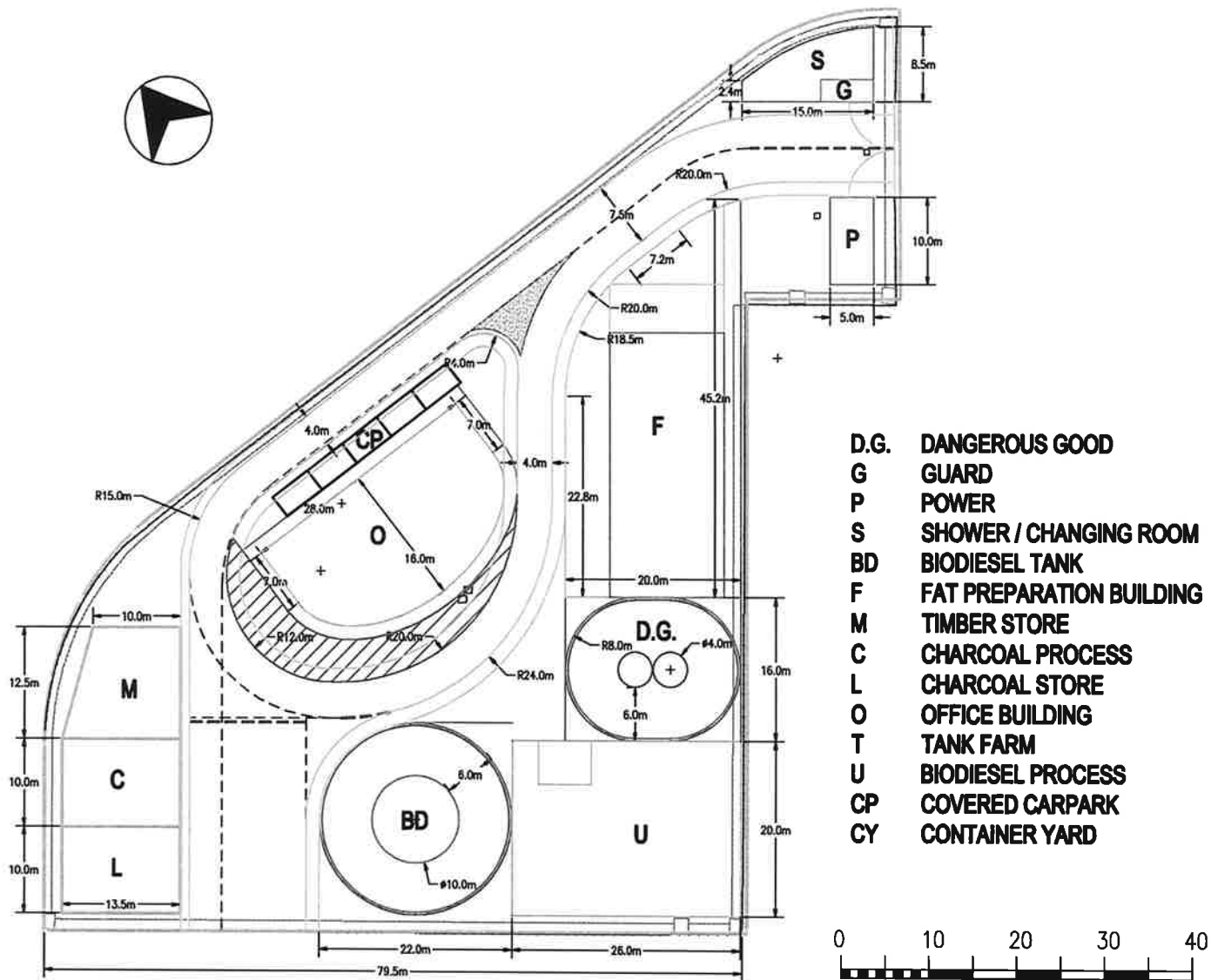
Summary

- Process meets EP Conditions
- ❶ Process meets EIA requirements (see above).
- ❷ Process is unlikely to warrant a full Design Audit (see above)
- No unacceptable environmental impacts – allow process to operate
- ❸ Unacceptable/undetermined environmental impacts – do not allow process to operate until Design Audit has been completed and approved

Note : ❶, ❷ and ❸ relate to the process review flowchart, EIA Report Figure 12.1

Sign-off Requirements

	ET	IEC	EPD	Operator
Name	Hyder Consulting	Scott Wilson	Waste Reduction & EcoPark Group	Serco Guardian Joint Venture
Sign-off	Certified	Verified	Approved	Tenant Advised
Date				
Signed	Alexi BHANJA	Mike BAINS	Lawrence WONG	T C HON
Role	ET Leader	IEC	Principal EPO	Park Manager
Signature				



G/F LAYOUT PLAN VER.3.2 3D

SCALE 1:750

Table 1 - Schedule of Environmental Aspects and Impacts

Supply Chain	Supplier/Purchasing	Producing	Delivering	Sales	Customer
Life Cycle	Material acquisition	Manufacturing	Transport	Storage & Packaging	Utilization
Relevant Operation(s) (i.e. environmental aspects)	<ul style="list-style-type: none"> Collection of organic waste such as waste cooking oil/waste lipid/grease trap waste Procurement of reagents such as methanol and mineral acid 	<ul style="list-style-type: none"> Fat preparation Reaction process Separation/recovery process Neutralization Storage and transfer of products & reagents 	<ul style="list-style-type: none"> Delivery of biodiesel and heavy fraction of biodiesel as industrial grade Delivery of by-product such as inorganic salt 	<ul style="list-style-type: none"> Packaging of biodiesel and other by-products 	<ul style="list-style-type: none"> Use of biodiesel and other by-products
Environmental Impacts (including air, noise and water pollution as well as waste generation and material consumption)	<ul style="list-style-type: none"> Odour emission from collection operation Fugitive emission from procurement of reagents Accidental spillage of organic waste and reagents Noise and air emission from collection fleet exhaust Packaging waste arising from collection of organic waste and procurement of reagents 	<ul style="list-style-type: none"> Odour emission from fat preparation Fugitive emission from storage and transfer of reagents Wastewater arising from fat preparation Accidental spillage of organic waste, reagents and products/by-products Noise and air emission from plant/equipment exhaust By-products such as inorganic salt and glycerin generated from separation/recovery process Consumption of reagents 	<ul style="list-style-type: none"> Air and noise emission from delivery fleet exhaust Accidental spillage of products/by-products 	<ul style="list-style-type: none"> Accidental spillage of products/by-products Packaging waste such as containers 	<ul style="list-style-type: none"> Improper maintenance of vehicle/fleet/plant/equipment leads to higher noise and air emission and fuel consumption (energy inefficient) Disposal of by-products leads to waste generation Accidental spillage of products/by-products



XXA335466

Table 2 - Schedule of Environmental Mitigation/Waste Management Measures and Green Initiatives

Supply Chain	Supplier/Purchasing	Producing	Delivering	Sales	Customer
Life Cycle	Material acquisition	Manufacturing	Transport	Storage & Packaging	Utilization
Relevant Operation(s) (i.e. environmental aspects)	<ul style="list-style-type: none"> Collection of organic waste such as waste cooking oil/waste lipid/grease trap waste Procurement of reagents such as methanol and mineral acid 	<ul style="list-style-type: none"> Fat preparation Reaction process Separation/recovery process Neutralization Storage and transfer of products & reagents 	<ul style="list-style-type: none"> Delivery of biodiesel and heavy fraction of biodiesel as industrial grade Delivery of by-product such as inorganic salt 	<ul style="list-style-type: none"> Packaging of biodiesel and other by-products 	<ul style="list-style-type: none"> Use of biodiesel and other by-products
Mitigation/Waste Management Measures (Items C1 & C2)	<ul style="list-style-type: none"> Use of pump truck to minimize odour emission Establishment of proper storage facility for dangerous goods Provision of training on spillage prevention and control & conduct of drill using spill control kit Use of sulfur free biodiesel as the fuel of collection fleet Routine maintenance of collection fleet Separation of organic waste at source with incentive scheme in place (i.e. preventing organic waste from discharging into foul sewer) Reuse of containers in packaging biodiesel and other by-products Arrangement for surplus metal container to be collected by metal recycling companies 	<ul style="list-style-type: none"> Use of air extraction system for collection of odourous gases Use of jacket pipes for transferring reagents to minimize fugitive emission Discharge of wastewater into foul sewer Provision of training on spillage prevention and control & conduct of drill using spill control kit Concrete paving with bund as containment of spillage Use of sulfur free biodiesel as the fuel of plant/equipment Routine maintenance of plant/equipment (i.e. generation sets, boilers, etc.) Use of inorganic salt (i.e. by-product) as fertilizer in landscaping work Blending of glycerin and heavy fraction biodiesel to produce industrial grade biodiesel 	<ul style="list-style-type: none"> Provision of training on spillage prevention and control & conduct of drill using spill control kit Use of sulfur free biodiesel as the fuel of delivery fleet Routine maintenance of delivery fleet 	<ul style="list-style-type: none"> Provision of training on spillage prevention and control & conduct of drill using spill control kit Reuse of containers in packaging biodiesel and other by-products 	<ul style="list-style-type: none"> Improper maintenance of vehicle/fleet/plant/equipment leads to higher noise and air emission and fuel consumption (energy inefficient) Disposal of by-products leads to waste generation Accidental spillage of products/by-products
Green Initiatives (Item C3)	<ul style="list-style-type: none"> Assist waste producer (e.g. catering industry) in participating into Wastewise Scheme Use of computer programme to enhance logistic/route planning for collection of organic waste (i.e. minimize usage of fuel) 	<ul style="list-style-type: none"> Application of algae tube for odour removal Procurement of flaked timber (through by-product exchange) to produce biocharcoal – an effective solid catalyst in substitution for mineral acid (i.e. reduced consumption of mineral acid) Greening the rooftop of plant facility 	<ul style="list-style-type: none"> N/A 	<ul style="list-style-type: none"> Planning for participation into the environmental awards such as eco-product, eco-business, etc. 	<ul style="list-style-type: none"> Establishment of Biodiesel Fan Club for exchange of views and information among users, suppliers, authorities, academic institution and other stakeholders

EcoPark Process Review Checklist

General Details

PRC No. 003 (PRC 1 of 1)

Tenant Ref. No. _____

Tenant Name Hung Wai Wooden Board Company

EcoPark Lot No. EP06-034

Related Processes PRC _____

Process Overview and Throughput

Material Type Wood

Process Name Waste wood recycling

Process Specifics Hydraulic compaction / mechanical shearing

Details Attached Yes (attached) No, not required

Associated Material Throughput (incl. DGs, if any)

Material	In/Out	Throughput (tonnes/yr)
Waste wood	In	65,000
Wooden board	Out	50,000

Throughput < EIA Limit? Yes No, exceeds by _____

Risk Assessment Yes (attached) No, not required

Impact Assessment

Process has already been assessed in the EIA (from EIA Table 14.1):

Impacts to:

AQ Yes No None

WQ Yes No None

WM Yes No Metals/plastics to other recyclers

CL Yes No None

Note : AQ=Air Quality | WQ = Water Quality | WM = Waste Management | CL=Contaminated Land

EcoPark Process Review Checklist

Impact Assessment (continued)

Proposed Mitigation The tenant proposes to use plant and equipment to separate wood materials from other reusable materials, such as plastic, paper, metals, etc. The sorted reusable materials will be made available to other recyclers within EcoPark as feedstock. As such, the quantity of materials that needs to be disposed of as waste can be minimised.

Includes Chimney ? Yes No

If Yes, Complies with EIA Table 13.1? Yes No Pending Confirmation





Process has not been assessed in the EIA but is unlikely to warrant a full Design Audit because:

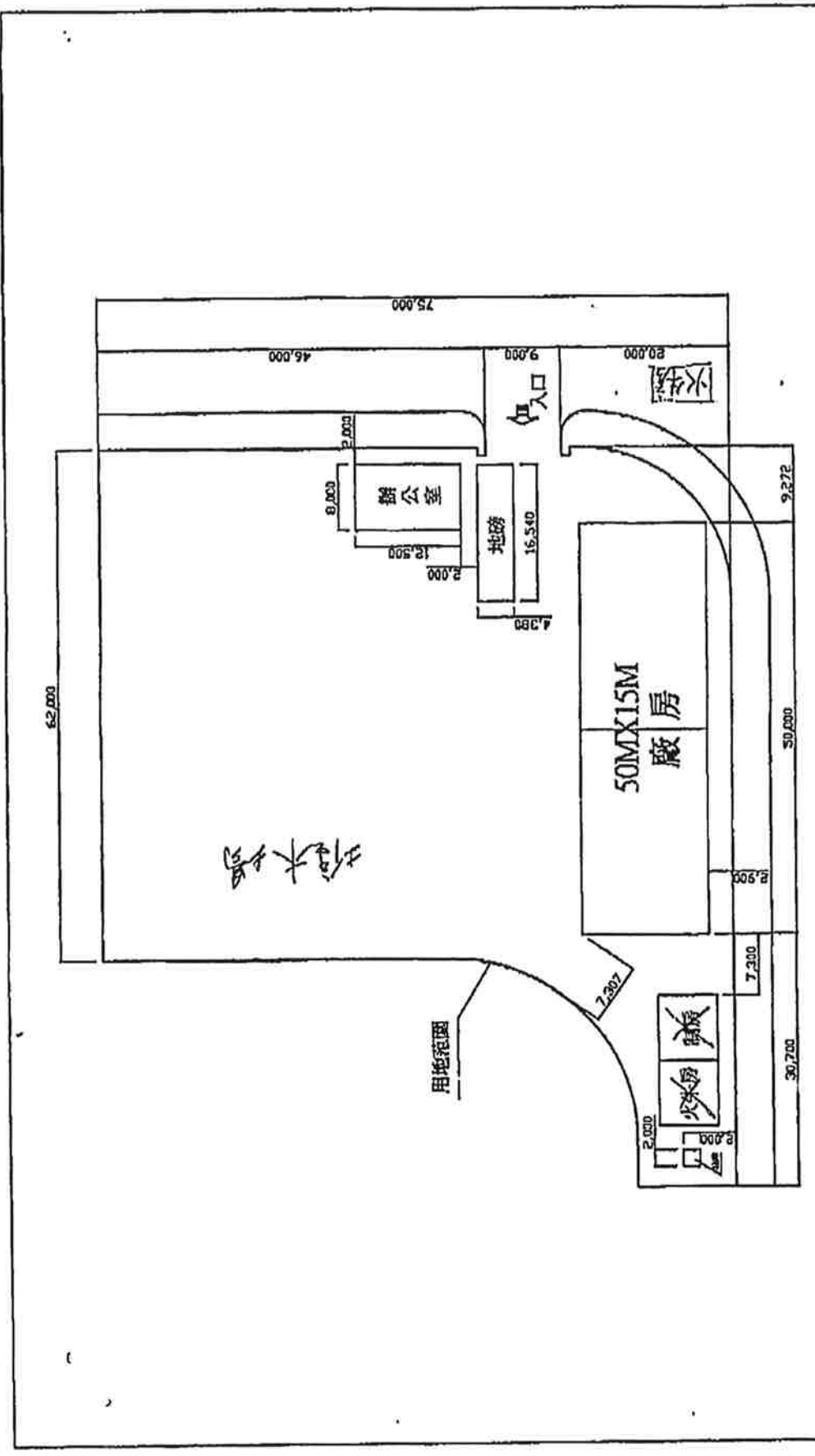
Summary

- Process meets EP Conditions
- ❶ Process meets EIA requirements (see above).
- ❷ Process is unlikely to warrant a full Design Audit (see above)
- No unacceptable environmental impacts – allow process to operate
- ❸ Unacceptable/undetermined environmental impacts – do not allow process to operate until Design Audit has been completed and approved

Note : ❶, ❷ and ❸ relate to the process review flowchart, EIA Report Figure 12.1

Sign-off Requirements

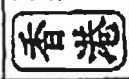
	ET	IEC	EPD	Operator
Name	Hyder Consulting	Scott Wilson	Waste Reduction & EcoPark Group	Serco Guardian Joint Venture
Sign-off	Certified	Verified	Approved	Tenant Advised
Date	20/03/08	1/04/08		7/4/08
Signed	Alexi BHANJA	Mike BAINS	Lawrence WONG	T C HON
Role	ET Leader	IEC	Principal EPO	Park Manager
Signature				



Revision	Date	Description	Checked
Drawing NO.			
Job NO.		Scale	1:630
Drawn	Checked	By	

鴻偉公司廠房用地佈置

Hong Kong Pre-fabricated Products Ltd.
 香港預製件有限公司





XXA337689

最近地下辦公室平面圖

地下

